



Standard and Hi-Flux / 9 - 120 m<sup>3</sup>/h

HiFlux TM Magnetic Filters for pressure systems are used where there is a need for reliable retention of magnetic particles of less than 1 micron.

The filter housing is designed for 10 bar or 16 bar working pressure and is equipped with a simple and safe closing system which makes the cleaning time short, thereby maximizing the time the filters are in operation.

The unique magnetic system ensures that magnetic particles are retained from the total flow through the filter. This is achieved by forcing the liquid closely past a magnetic field which is generated by magnets with changing polarity which then collect and retain the particles.

The polarised magnetic system induces a field around even the smallest particles, ensuring efficient retention of particles of less than 1 micron.

The efficiency of the magnetic filtration depends on the viscosity of the liquid, its speed past the magnetic field and the temperature.

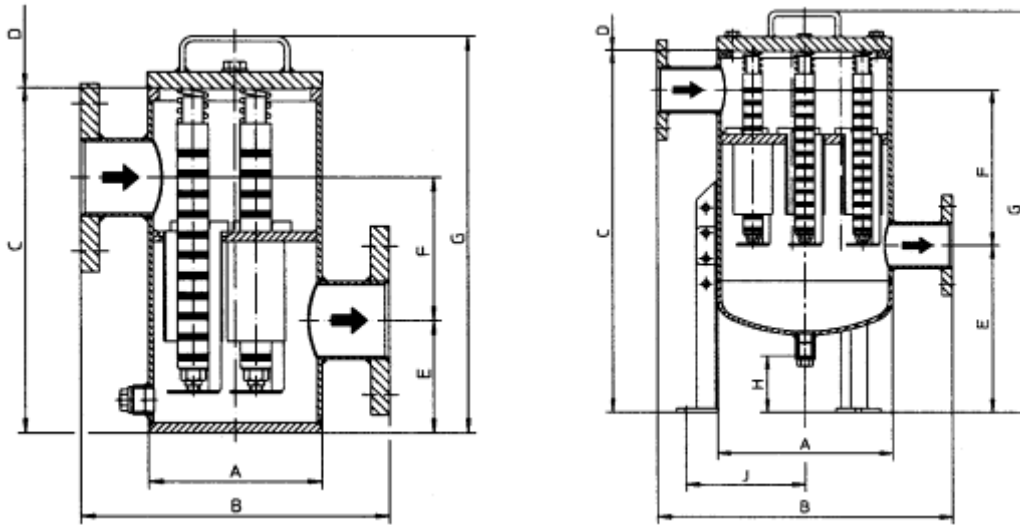
The filter will actively retain ferromagnetic particles and some iron oxides of the Fe<sub>3</sub>O<sub>4</sub>, γ-Fe<sub>2</sub>O<sub>4</sub>, δ-Fe<sub>2</sub>O<sub>3</sub> type and other mixed oxides of Fe<sub>3</sub>O<sub>4</sub>, where the spinel structure FeO is substituted by other oxides, e.g. CoO, MnO, NiO, ZnO, Cr<sub>2</sub>O<sub>3</sub>.

The standard version of the filter is supplied with the highly efficient **Hi-Flux** magnetic system, which provides a magnetic field that is seven times stronger, making it possible to increase both efficiency and capacity significantly.

Special versions can be supplied in accordance with the customers' specifications.

Typical special versions include a different choice of materials, another type/size connection, different pressure and/or temperature levels. Greater capacities and/or approval in accordance with the PED directive 97/23/EC.





Type	A	B	C	D	E	F	G	H	J	Drain	Air	Conne- ction	Weight	No. of fittings
	mm	mm	mm	mm	mm	mm	mm	mm	mm	Prop	Prop	DN	Kg.	Stk.
<b>TM 3-50</b>	168,3	300	337	220	110	140	393			G½B	B½B	50	27	2
<b>TM 5-80</b>	219,1	360	468	300	136	215	524			G½B	G½B	80	49	4
<b>TM 8-100</b>	273,0	460	670	350	325	215	732	72	185	G1B	G½B	100	83	4
<b>TM 12-125</b>	323,9	550	675	400	290	215	765	72	210	G1B	G½B	125	105	6

HiFlux standard type TM filters are supplied in welded steel fitted with HiFlux magnetic system or in stainless acid-proof EN 1.4404 steel fitted with HiFlux magnetic system.

Design pressure:	10 bar or 16 bar
Test pressure:	According to EN 13445
Differential pressure standard:	0,05 bar
Differential pressure HiFlux:	0,10 bar
Max. working temperature:	110° C (water) or according to customer requirements
Flange connection:	EN 1092-1

Capacity:  
(at a viscosity of 1 cSt)

Type	Number of magnetic bars	Capacity in m³/h HiFlux
<b>TM 3-50</b>	3	25
<b>TM 5-80</b>	5	50
<b>TM 8-100</b>	8	80
<b>TM12-125</b>	12	120

To maintain efficiency the capacity should be reduced by 0.2% for every °C by which the temperature exceeds 100 °C.